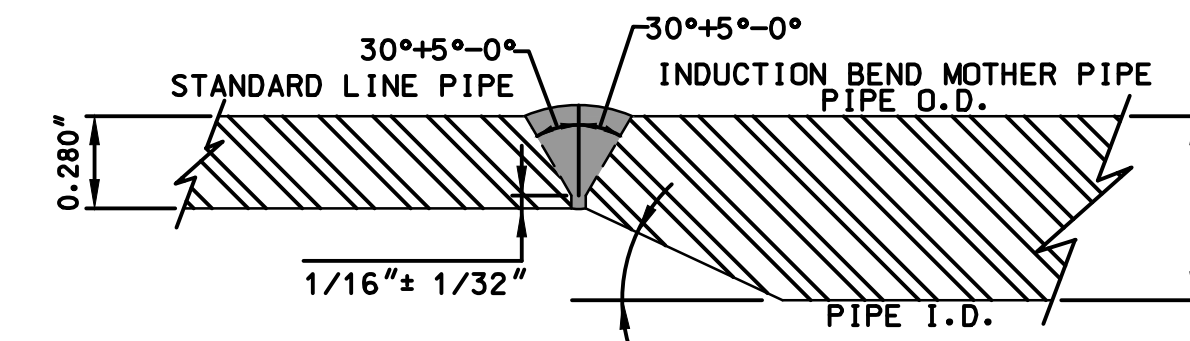


ITEM NO.	SIZE	QUANTITY	DESCRIPTION
100	6"	6,873'	6.625" O.D., API 6D, SMLS 0.280" W.T., GRADE X-60 FBE, 14 MIL
101	6"	113'	6.625" O.D., API 6D, SMLS 0.280" W.T., GRADE X-60 FBE, 14 MIL, ARO, 20 MIL, MIN
102	6"	2	INDUCTION BEND, API 5L, PSL2, 6" NPS, 0.432" W.T., GR X60, 22.5° BEND ANGLE, 5D CENTERLINE RADIUS
103	6"	2	INDUCTION BEND, API 5L, PSL2, 6" NPS, 0.432" W.T., GR X60, 27° BEND ANGLE, 5D CENTERLINE RADIUS
104	6"	4	INDUCTION BEND, API 5L, PSL2, 6" NPS, 0.432" W.T., GR X60, 30° BEND ANGLE, 5D CENTERLINE RADIUS
105	6"	4	INDUCTION BEND, API 5L, PSL2, 6" NPS, 0.432" W.T., GR X60, 45° BEND ANGLE, 5D CENTERLINE RADIUS
106	6"	2	INDUCTION BEND, API 5L, PSL2, 6" NPS, 0.432" W.T., GR X60, 60° BEND ANGLE, 5D CENTERLINE RADIUS
107	6"	4	INDUCTION BEND, API 5L, PSL2, 6" NPS, 0.432" W.T., GR X60, 90° BEND ANGLE, 5D CENTERLINE RADIUS
108	-		LINE MARKER
109	-		CP TEST STATION



30° MAX./14° MIN.  
FIELD INTERNAL TAPER BORE  
6.625" O.D. x 0.280" W.T. TO 0.432" W.T.

**DETAIL 1**  
**TRANSITION BORE DETAIL**  
SCALE: N.T.S.

K:\8122 KYMEA\0-Cover\8122.001-0007\11220206 3:52:00 PM, Last Saved 11/22/2026 9:51:42 AM by NROTH, Last Plot 11/22/2026 3:52:00 PM by JOHN RAMSEY

GENERAL NOTES	REFERENCE DRAWINGS		REVISIONS				REVISIONS				DRAWING STATUS			
	DWG. NO.	DESCRIPTION	NO.	DATE	BY	DESCRIPTION	NO.	DATE	BY	DESCRIPTION	NO.	DATE	DESCRIPTION	
<div style="border: 2px solid red; padding: 5px; display: inline-block;"> <b>ISSUED FOR CONSTRUCTION</b>  1/12/2026                 </div>														
						0	1/12/2026	JIR	ISSUED FOR CONSTRUCTION					

SCALE: NONE DRAWN: CGS CHK'D: JS APPROVED: BM ENSITE JOB NO.: 8122 CLIENT FILE NO.: ENSITE FILE NO.: 8122.0001.1104.dwg	<b>EnSiteUSA</b> <small>HOUSTON, TX 713-456-7890 LEXINGTON, KY 859-873-2076</small>	<b>KYMEA</b> <small>KENTUCKY MUNICIPAL ENERGY AGENCY</small> <b>KYMEA 6" LATERAL AND FACILITIES</b> CIVIL BILL OF MATERIAL	NO. 8122.0001.1104 REV. 0
---	--	---	------------------------------



ITEM NO.	SIZE	QUANTITY	DESCRIPTION
1	6"	60'	PIPE, 6.625" OD, 0.280" W.T., CS (STD), BARE, API 5L PSL2, GR. X60
2	6"	180'	PIPE, 6.625" OD, 0.280" W.T., CS (STD), FBE COATED, 14-16 DFT, API 5L PSL2, GR. X60
3	2"	60'	PIPE: 2.375" OD, 0.218" WT (SCH 80), SMLS, CS, BARE, ASTM A106 GR. B
4	2"	200'	PIPE: 2.375" OD, 0.218" WT (SCH 80), SMLS, CS, FBE COATED, 14-16 MILS DFT, ASTM A106 GR. B
5	3"	10'	PIPE: 3.500" OD, 0.216" WT (STD), SMLS, CS, BARE, ASTM A106 GR. B
11	6"	20	ELBOW: 90° LR; 6", BW, 0.280" WT (STD), CS, MSS SP-75 GR. WPHY-52 OR ASME B16.9
12	6"	8	TEE: 6"x6", BW, 0.280" WT (STD), CS, MSS SP-75 GR. WPHY-52 OR ASME B16.9
13	6"x3"	4	TEE: REDUCING, 6"x3", BW, 0.280" WT x 0.216" WT, CS, MSS SP-75 GR. WPHY-52 OR ASME B16.9
14	2"	10	ELBOW: 90° LR; 2", BW, 0.218" WT (XH), CS, MSS SP-75 GR. WPHY-52 OR ASME B16.9
15	3"x2"	4	REDUCER, CONC., 3"x2", BW, 0.216" WT x 0.218" WT, CS, MSS SP-75 GR. WPHY-52 OR ASME B16.9
16	1"on6"	6	THREAD-O-LET, 1" ON 6" (0.280") x (0.179"), ASTM A694, ASME B31.8, 0.5 DF, 1480 PSIG AT 100 DEGREES F
17	3"	1	ELBOW: 90° LR; 3", BW, 0.216" WT, CS, MSS SP-75 GR. WPHY-52 OR ASME B16.9
18	2"on6"	1	WELD-O-LET, 2" ON 6" (0.280") x (0.218"), ASTM A694, ASME B31.8, 0.5 DF, 1480 PSIG AT 100 DEGREES F
19	2"	1	TEE: 2"x2", FNPT, 0.218" WT (XH), FORGED CS, ASME B16.9, ASTM A234
20	2"x1"	1	SWAGE: CONC., 2"x1", FNPT, 0.218" WT x 0.179" WT, FORGED CS, ASME B16.9, ASTM A234
21	6"	21	FLANGE: RFWN; 6", ASME CL 600, BTM 0.280" WT PIPE, CS, ASTM A694 GR. F52, MSS SP-44
22	2"	7	FLANGE: RFWN; 2", ASME CL 600, BTM 0.218" WT PIPE, CS, ASTM A694, MSS SP-44
23	6"	4	FLANGE, BLIND; 6", ASME CL 600, RF, NPT 1/2" C, D & T (NPT), ASTM A694, MSS SP-44
24	2"	3	FLANGE, BLIND; 2", ASME CL 600, RF, NPT 1" C, D & T (NPT), ASTM A694, MSS SP-44 (LOW POINT DRAIN)
31	6"	15	GASKET; 6", ASME CL 600, SPIRAL WOUND, FLEXITALLIC TYPE CGI, w/ 304 SS WINDING, 1/8" THK., FLEXIBLE GRAPHITE FILLER, ASME B16.20
32	2"	10	GASKET; 2", ASME CL 600, SPIRAL WOUND, FLEXITALLIC TYPE CGI, w/ 304 SS WINDING, 1/8" THK., FLEXIBLE GRAPHITE FILLER, ASME B16.20
33	6"	7	PIKOTEK VCS; GASKET: INSULATION SET; 6", ASME CL 600, G-10 GASKET LAMINATED, 0.26" THICK, w/316 SST CORE, SPRING ENERGIZED PTFE SEAL, G-10 SLEEVES & WASHERS
34	2"	1	PIKOTEK VCS; GASKET: INSULATION SET; 2", ASME CL 600, G-10 GASKET LAMINATED, 0.26" THICK, w/316 SST CORE, SPRING ENERGIZED PTFE SEAL, G-10 SLEEVES & WASHERS
41	1"	15 SETS	BOLT: STUD; 1" DIA x 7-1/4" LG, W/ 2-2H NUTS, W/O WASHERS, ASTM A194, GR. 2H, TEFLON COATED, ASTM A193 GR. B7 (FOR 6" ASME CL 600 FLANGE, 12 EA.)
42	5/8"	10 SETS	BOLT: STUD; 5/8" DIA x 5" LG, W/ 2-2H NUTS, W/O WASHERS, ASTM A194, GR. 2H, TEFLON COATED, ASTM A193 GR. B7 (FOR 2" ASME CL 600 FLANGE, 8 EA.)
43	1"	7 SETS	BOLT: STUD; 1" DIA x 8-1/4" LG, W/ 2-2H NUTS, W/O WASHERS, ASTM A194, GR. 2H, TEFLON COATED, ASTM A193 GR. B7 (FOR 6" ASME CL 600 FLANGE, 12 EA., FOR INSULATING KIT)
44	5/8"	1 SETS	BOLT: STUD; 5/8" DIA x 6" LG, W/ 2-2H NUTS, W/O WASHERS, ASTM A194, GR. 2H, TEFLON COATED, ASTM A193 GR. B7 (FOR 2" ASME CL 600 FLANGE, 8 EA., FOR INSULATING KIT)
51	6"	5	VALVE, BALL, 6", ANSI 600, RFFE, FULL PORT, DOUBLE BLOCK AND BLEED, API-6D MONOGRAM, CS BODY, ENP STEEL BALL AND TRIM, TRUNNION MOUNTED, FOR NAT. GAS SERVICE, -20 TO 120 DEG. F., HAND WHEEL OPERATED, C/W LEVER, PRIMED FOR ABOVE GRADE SERVICE, API-6D, PER BOARDWALK EC-PS-027
52	2"	5	VALVE, BALL, 2", ANSI 600, RFFE, FULL PORT, DOUBLE BLOCK AND BLEED, API-6D MONOGRAM, CS BODY, ENP STEEL BALL AND TRIM, TRUNNION MOUNTED, FOR NAT. GAS SERVICE, -20 TO 120 DEG. F., LEVER OPERATED, C/W LEVER, PRIMED FOR ABOVE GRADE SERVICE, API-6D, PER BOARDWALK EC-PS-027
53	1"	9	VALVE, BALL - 1", FNPT, 3000 PSIG WP MIN, PER ASME B16.34, CS, FP, WRENCH OPERATED
54	1/2"	4	VALVE, BALL - 1/2", FNPT, 3000 PSIG WP MIN, PER ASME B16.34, CS, FP, WRENCH OPERATED
55	2"	2	VALVE, BALL - 2", FNPT, 3000 PSIG WP MIN, PER ASME B16.34, CS, FP, WRENCH OPERATED
61	2"	1	YALE CLOSURE FIG 500: 2", 2.375" OD, 0.218" WT (SCH 80), CS, ASTM A105 GR B, ASME CL600, BW, ASTM A105, W/ 1/2" NPT CENTER TAPPED CAP
62	1"	9	NIPPLE, 1", 1.315" O.D. x 0.179" W.T. x 4" LG., SMLS, API-5L GR. B, TBE
63	1/2"	6	NIPPLE, 1/2", 0.084" O.D. x 0.147" W.T. x 3" LG., SMLS, API-5L GR. B, TBE
64	1"	6	ELL, 1", 90 DEG, FNPT, 0.179" W.T., FORGED CS, A105, ASME/ANSI B16.11
65	1"	9	PLUG, HEXHEAD - 1", CLASS 3000, CS, MNPT, ASTM A105, PER ASME B16.11
66	1/2"	4	PLUG, HEXHEAD - 1/2", CLASS 3000, CS, MNPT, ASTM A105, PER ASME B16.11
67	2"	1	NIPPLE, 2", 2.375" O.D. x 0.218" W.T. x 6" LG., SMLS, API-5L GR. B, WE X THRD
68	2"	3	NIPPLE, 2", 2.375" O.D. x 0.218" W.T. x 6" LG., SMLS, API-5L GR. B, TBE
69	2"	1	UNION, INSULATING, 2", 0.218" W.T., 3000#, FORGED STEEL, FNPT, ASTM A105
70	2"	1	PLUG, HEXHEAD - 2", CLASS 3000, CS, MNPT, ASTM A105, PER ASME B16.11
71	6"	6	E-Z LINE FIG. 510F PIPE SUPPORT FOR 6" PIPE, D=2'-6"
72	2"	1	E-Z LINE FIG. 204F PIPE SUPPORT FOR 2" PIPE, D=2'-0"

H:\8122-KYMEA\4-Mech\8122.0001.4205.dwg Plotdate: Jan 12, 2026 - 9:15am by CSReindorf

GENERAL NOTES	REFERENCE DRAWINGS		REVISIONS				REVISIONS				DRAWING STATUS		SCALE: NONE		
	DWG. NO.	DESCRIPTION	NO.	DATE	BY	DESCRIPTION	NO.	DATE	BY	DESCRIPTION	NO.	DATE	DESCRIPTION	DRAWN	DATE
<b>ISSUED FOR CONSTRUCTION</b>  <b>1/12/2026</b>	8122.0001.4202	PIPING PLAN - GAS YARD					0	1/12/2026	CGS	ISSUED FOR CONSTRUCTION				CGS	03/19/2025
	8122.0001.4203	PIPING SECTIONS - GAS YARD												JS	03/31/2025
	8122.0001.4204	PIPING SECTION & DETAILS - GAS YARD												BM	



HOUSTON, TX 713-456-7880  
LEXINGTON, KY 859-873-0076

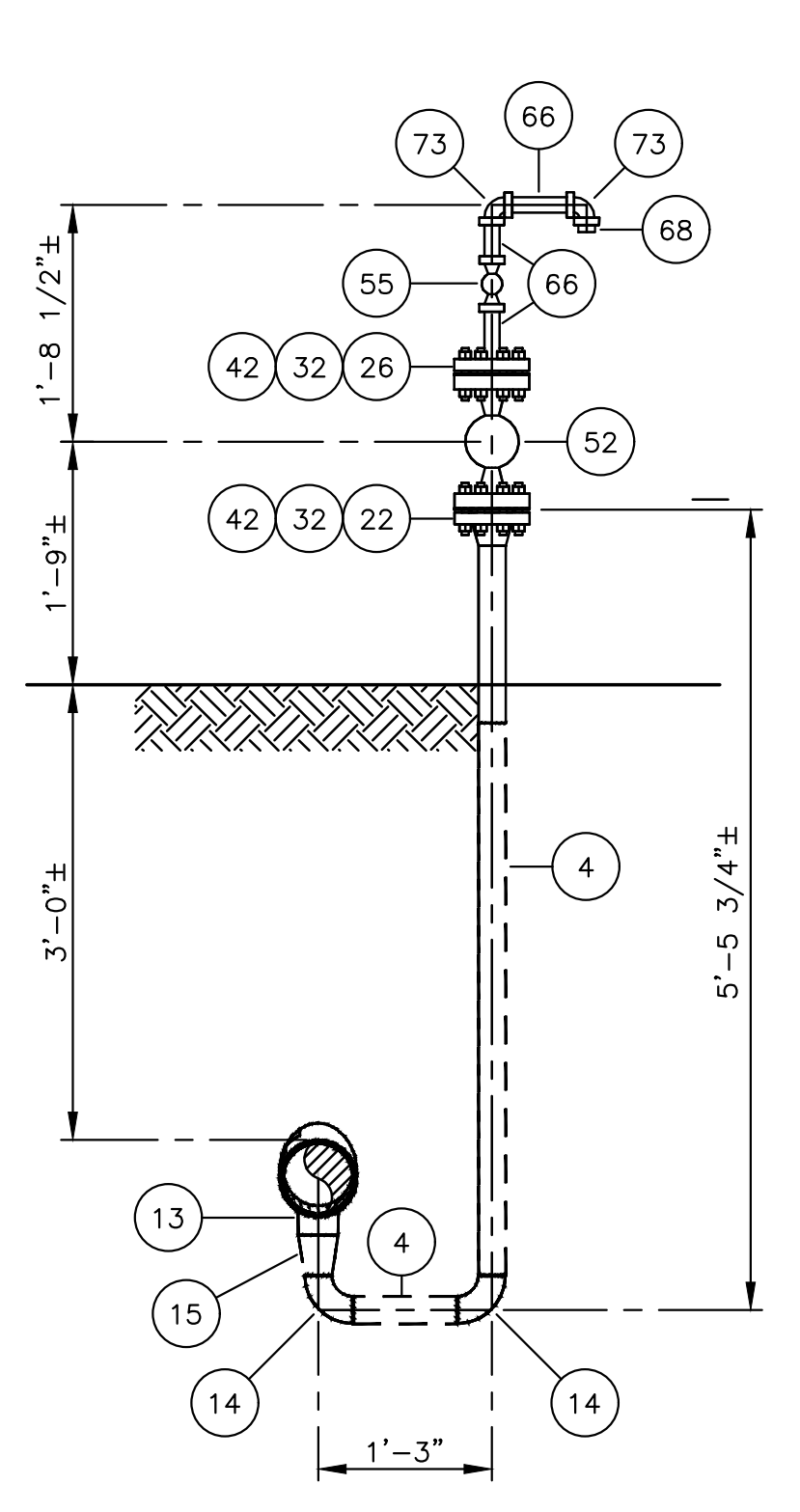


**KYMEA 6" LATERAL AND FACILITIES**  
PLANT GAS YARD  
BILL OF MATERIALS

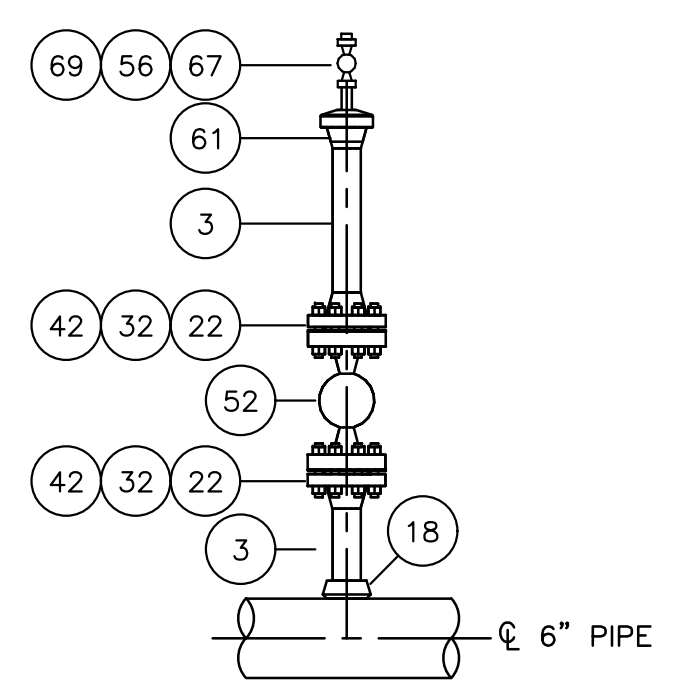
NO. 8122.0001.4205 REV. 0

www.EnSiteUSA.com

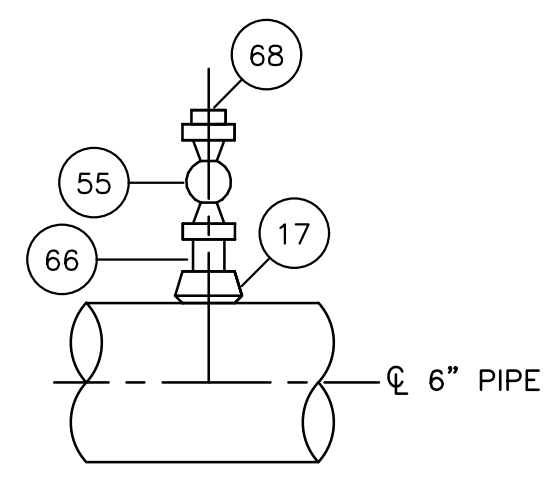




**1** **DETAIL**  
4103 SCALE: 3/4"=1'-0"



**2** **DETAIL**  
4103 SCALE: 3/4"=1'-0"



**3** **DETAIL**  
4103 SCALE: 1-1/2"=1'-0"

ITEM NO.	SIZE	QUANTITY	DESCRIPTION
1	6"	60'	PIPE, 6.625" OD, 0.280" W.T., CS (STD), BARE, API 5L PSL2, GR. X60
2	6"	80'	PIPE, 6.625" OD, 0.280" W.T., CS (STD), FBE COATED, 14-16 DFT, API 5L PSL2, GR. X60
3	2"	40'	PIPE, 2.375" OD, WT (SCH 80), SMLS, CS, BARE, ASTM A106 GR. B
4	2"	80'	PIPE, 2.375" OD, WT (SCH 80), SMLS, CS, FBE COATED, 14-16 MILS DFT, ASTM A106 GR. B
11	6"	11	ELBOW: 90° LR; 6", BW, 0.280" WT (STD), CS, MSS SP-75 GR. WPHY-52 OR ASME B16.9
12	6"	6	TEE: 6"x6", BW, 0.280" WT (STD), CS, MSS SP-75 GR. WPHY-52 OR ASME B16.9
13	6"x3"	1	TEE: REDUCING, 6"x3", BW, 0.280" WT x 0.216" WT, CS, MSS SP-75 GR. WPHY-52 OR ASME B16.9
14	2"	14	ELBOW: 90° LR; 2", BW, 0.218" WT (XH), CS, MSS SP-75 GR. WPHY-52 OR ASME B16.9
15	3"x2"	2	REDUCER, CONC., 3"x2", BW, 0.216" WT x 0.218" WT, CS, MSS SP-75 GR. WPHY-52 OR ASME B16.9
16			NUMBER NOT USED
17	1"on6"	6	THREAD-O-LET, 1" ON 6" SCH 40 (0.280") x SCH 80 (0.179"), ASTM A694, MSS SP-97, 0.5 DF, 1480 PSIG AT 100 DEGREES F
18	2"on6"	1	WELD-O-LET, 2" ON 6" SCH 40 (0.280") x SCH 80 (0.218"), ASTM A694, MSS SP-97, 0.5 DF, 1480 PSIG AT 100 DEGREES F
19	2"	1	TEE: 2"x2", BW, 0.218" WT (STD), CS, MSS SP-75 GR. WPHY-52 OR ASME B16.9
21	6"	18	FLANGE: RFWN; 6", ASME CL 600, BTM 0.280" WT PIPE, CS, ASTM A694 GR. F52, MSS SP-44
22	2"	9	FLANGE: RFWN; 2", ASME CL 600, BTM 0.218" WT PIPE, CS, ASTM A694, MSS SP-44
23	2"	5	FLANGE: RFWN; 2", ASME CL 150, BTM 0.218" WT PIPE, CS, ASTM A694, MSS SP-44
24	3"	1	FLANGE: RFWN; 3", ASME CL 150, BTM 0.216" WT PIPE, CS, ASTM A694, MSS SP-44
25	6"	2	FLANGE, BLIND - 6", ASME CL 600, RF, NPT 1/2" C, D & T (NPT), ASTM A694, MSS SP-44
26	2"	1	FLANGE, BLIND; 2", ASME CL 600, RF, NPT 1" C, D & T (NPT), ASTM A694, MSS SP-44 (LOW POINT DRAIN)
27	2"	1	FLANGE, BLIND; 2", ASME CL 600, RF, NPT 1/2" C, D & T (NPT), ASTM A694, MSS SP-44
31	6"	16	GASKET; 6", ASME CL 600, SPIRAL WOUND, FLEXITALLIC TYPE CGI, w/ 304 SS WINDING, 1/8" THK., FLEXIBLE GRAPHITE FILLER, ASME B16.20
32	2"	8	GASKET; 2", ASME CL 600, SPIRAL WOUND, FLEXITALLIC TYPE CGI, w/ 304 SS WINDING, 1/8" THK., FLEXIBLE GRAPHITE FILLER, ASME B16.20
33	2"	3	GASKET; 2", ASME CL 150, SPIRAL WOUND, FLEXITALLIC TYPE CGI, w/ 304 SS WINDING, 1/8" THK., FLEXIBLE GRAPHITE FILLER, ASME B16.20
34	3"	1	GASKET; 3", ASME CL 150, SPIRAL WOUND, FLEXITALLIC TYPE CGI, w/ 304 SS WINDING, 1/8" THK., FLEXIBLE GRAPHITE FILLER, ASME B16.20
35	6"	4	PIKOTEK VCS; GASKET: INSULATION SET; 6", ASME CL 600, G-10 GASKET LAMINATED, 0.26" THICK, w/316 SST CORE, SPRING ENERGIZED PTFE SEAL, G-10 SLEEVES & WASHERS
36	2"	5	PIKOTEK VCS; GASKET: INSULATION SET; 2", ASME CL 600, G-10 GASKET LAMINATED, 0.26" THICK, w/316 SST CORE, SPRING ENERGIZED PTFE SEAL, G-10 SLEEVES & WASHERS
41	1"	16 SETS	BOLT: STUD; 1" DIA x 7-1/4" LG, W/ 2-2H NUTS, W/O WASHERS, ASTM A194, GR. 2H, TEFLON COATED, ASTM A193 GR. B7 (FOR 6" ASME CL 600 FLANGE, 12 EA.)
42	5/8"	8 SETS	BOLT: STUD; 5/8" DIA x 5" LG, W/ 2-2H NUTS, W/O WASHERS, ASTM A194, GR. 2H, TEFLON COATED, ASTM A193 GR. B7 (FOR 2" ASME CL 600 FLANGE, 8 EA.)
43	5/8"	3 SETS	BOLT: STUD; 5/8" DIA x 3 1/4" LG, W/ 2-2H NUTS, W/O WASHERS, ASTM A194, GR. 2H, TEFLON COATED, ASTM A193 GR. B7 (FOR 2" ASME CL 150 FLANGE, 4 EA.)
44	5/8"	1 SET	BOLT: STUD; 5/8" DIA x 3 1/2" LG, W/ 2-2H NUTS, W/O WASHERS, ASTM A194, GR. 2H, TEFLON COATED, ASTM A193 GR. B7 (FOR 3" ASME CL 150 FLANGE, 4 EA.)
45	1"	4 SETS	BOLT: STUD; 1" DIA x 8-1/4" LG, W/ 2-2H NUTS, W/O WASHERS, ASTM A194, GR. 2H, TEFLON COATED, ASTM A193 GR. B7 (FOR 6" ASME CL 600 FLANGE, 12 EA., FOR INSULATING KIT)
46	5/8"	5 SETS	BOLT: STUD; 5/8" DIA x 6" LG, W/ 2-2H NUTS, W/O WASHERS, ASTM A194, GR. 2H, TEFLON COATED, ASTM A193 GR. B7 (FOR 2" ASME CL 600 FLANGE, 8 EA., FOR INSULATING KIT)
51	6"	4	VALVE, BALL, 6", ANSI 600, RFFE, FULL PORT, DOUBLE BLOCK AND BLEED, API-6D MONOGRAM, CS BODY, ENP STEEL BALL AND TRIM, TRUNNION MOUNTED, FOR NAT. GAS SERVICE, -20 TO 120 DEG. F., HAND WHEEL OPERATED, C/W LEVER, PRIMED FOR ABOVE GRADE SERVICE, API-6D, PER BOARDWALK EC-PS-027
52	2"	3	VALVE, BALL, 2", ANSI 600, RFFE, FULL PORT, DOUBLE BLOCK AND BLEED, API-6D MONOGRAM, CS BODY, ENP STEEL BALL AND TRIM, TRUNNION MOUNTED, FOR NAT. GAS SERVICE, -20 TO 120 DEG. F., LEVER OPERATED, C/W LEVER, PRIMED FOR ABOVE GRADE SERVICE, API-6D, PER BOARDWALK EC-PS-027
53	2"	2	VALVE, BALL, 2", ANSI 150, RFFE, FULL PORT, DOUBLE BLOCK AND BLEED, API-6D MONOGRAM, CS BODY, ENP STEEL BALL AND TRIM, TRUNNION MOUNTED, FOR LIQUID SERVICE, -20 TO 120 DEG. F., LEVER OPERATED, C/W LEVER, PRIMED FOR ABOVE GRADE SERVICE, API-6D, PER BOARDWALK EC-PS-027
54			NUMBER NOT USED
55	1"	7	VALVE, BALL - 1", FNPT, 3000 PSIG WP MIN, PER ASME B16.34 , CS, FP, WRENCH OPERATED
56	1/2"	4	VALVE, BALL - 1/2", FNPT, 3000 PSIG WP MIN, PER ASME B16.34 , CS, FP, WRENCH OPERATED
61	2"	1	YALE CLOSURE FIG 500; 2", 2.375" OD, 0.218" WT (SCH 80), CS, ASTM A105 GR B, ASME CL600, BW, ASTM A105, W/ 1/2" NPT CENTER TAPPED CAP
62	2"	1	UNION, 2", 0.218" W.T., 3000#, FORGED STEEL, FNPT, ASTM A105
63	2"		NUMBER NOT USED
64	2"	1	NIPPLE, 2", 2.375" O.D. x 0.218" W.T. x 4" LG., SMLS, API-5L GR. B, TBE
65	2"	1	NUMBER NOT USED
66	1"	6	NIPPLE, 1", 1.315" O.D. x 0.179" W.T. x 3" LG., SMLS, API-5L GR. B, TBE
67	1/2"	4	NIPPLE, 1/2", 0.084" O.D. x 0.147" W.T. x 3" LG., SMLS, API-5L GR. B, TBE
68	1"	6	PLUG, HEXHEAD - 1", CLASS 3000, CS, MNPT, ASTM A105, PER ASME B16.11
69	1/2"	4	PLUG, HEXHEAD - 1/2", CLASS 3000, CS, MNPT, ASTM A105, PER ASME B16.11
70	2"	1	ORIFICE PLATE, 2", 0.250" BORE, ANSI 600, CS, ASTM A105, GR. B, PER ASME B16.5
71	2"	1	CAMLOCK FITTING, 2", FNPT, BRASS, PART A, FOR 2" TRUCK LOADOUT COMPLETE WITH CAP
72	2"	1	PCC LOAD LINE CONTAINER, PCC 301, YELLOW POLY, 6 GALLON, W/2" COLLAR, OR EQUAL
73	1"	2	ELL, 1", 90 DEG., FNPT, 0.179" W.T., FORGED CS, A105, ASME/ANSI B16.11
81	6"	6	E-Z LINE FIG. 510F PIPE SUPPORT FOR 6" PIPE
82	2"	2	E-Z LINE FIG. 204F PIPE SUPPORT FOR 2" PIPE
90	4"	8	4ft LED C1D2 RATED LIGHT, CROUSE-HINDS MLLA 4NP12-UNV1-S903-SR61-EM1-WH-M2 OR SIMILAR

H:\8122-KYMEA-Mech\8122.0001.4105.dwg Plotter: Jun 12, 2026 - 9:46am by CSteindorf

**ISSUED FOR CONSTRUCTION**  
1/12/2026

REFERENCE DRAWINGS		REVISIONS				REVISIONS				DRAWING STATUS					
DWG. NO.	DESCRIPTION	NO.	DATE	BY	DESCRIPTION	NO.	DATE	BY	DESCRIPTION	NO.	DATE	DESCRIPTION	NO.	DATE	DESCRIPTION
8122.0001.4102	PIPING PLAN - TAP & METER SITE					0	1/12/2026	CGS	ISSUED FOR CONSTRUCTION						
8122.0001.4103	PIPING SECTIONS - TAP & METER SITE														
8122.0001.4104	PIPING SECTIONS - TAP & METER SITE														

**SCALE: AS SHOWN**

DRAWN: CGS DATE: 03/19/2025  
 CHK'D: JS DATE: 03/31/2025  
 APPROVED: BM DATE: \_\_\_\_\_

ENSITE JOB NO.: 8122  
 AFE/P.O.NO.: \_\_\_\_\_  
 CLIENT FILE NO.: \_\_\_\_\_  
 ENSITE FILE NO.: 8122.0001.4105.dwg

**EnSiteUSA**  
 HOUSTON, TX 713-456-7880  
 OFFICES: LEXINGTON, KY 859-873-0076

**KYMEA**  
 KENTUCKY MUNICIPAL ENERGY AGENCY

**KYMEA 6" LATERAL AND FACILITIES**

PURCHASE POINT GAS YARD  
 PIPING DETAILS & BILL OF MATERIALS

NO. 8122.0001.4105 REV. 0